



## Kelly Ray Sweet Potato Vine

*Ipomoea batatas 'Kelly Ray'*

Height: 8 inches

Spread: 3 feet

Spacing: 24 inches

Sunlight: ☐ ☒

Hardiness Zone: (annual)

### Description:

An outstanding vine with marbled dark purple and lime green foliage; a great addition to combination planters and hanging baskets, as well as being a base for indoor containers; loves heat and humidity

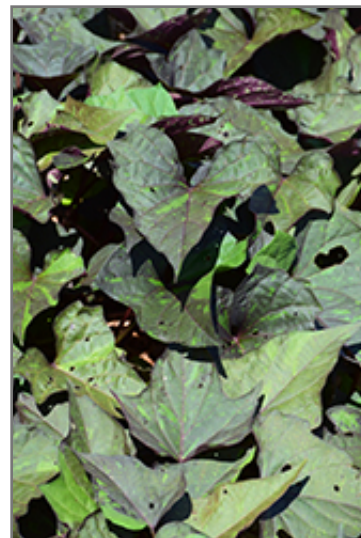
### Features & Attributes

Kelly Ray Sweet Potato Vine is primarily valued in the home for its spreading and trailing habit of growth. Its attractive heart-shaped leaves emerge chartreuse, turning deep purple in color with showy lime green variegation and tinges of burgundy throughout the year.

This is a dense herbaceous houseplant with a trailing habit of growth, eventually spilling over the edges of hanging baskets and containers. Its relatively fine texture sets it apart from other indoor plants with less refined foliage. This plant may benefit from an occasional pruning to look its best.

### Planting & Growing

When grown indoors, Kelly Ray Sweet Potato Vine can be expected to grow to be about 8 inches tall at maturity, with a spread of 3 feet. It grows at a fast rate, and under ideal conditions can be expected to live for approximately 1 years. This houseplant will do well in a location that gets either direct or indirect sunlight, although it will usually require a more brightly-lit environment than what artificial indoor lighting alone can provide. It does best in average to evenly moist soil, but will not tolerate standing water. The surface of the soil shouldn't be allowed to dry out completely, and so you should expect to water this plant once and possibly even twice each week. Be aware that your particular watering schedule may vary depending on its location in the room, the pot size, plant size and other conditions; if in doubt, ask one of our experts in the store for advice. It is not particular as to soil pH, but grows best in rich soil. Contact the store for specific recommendations on pre-mixed potting soil for this plant.



*Kelly Ray Sweet Potato Vine foliage*  
Photo courtesy of NetPS Plant Finder

There are many factors that will affect the ultimate height, spread and overall performance of a plant when grown indoors; among them, the size of the pot it's growing in, the amount of light it receives, watering frequency, the pruning regimen and repotting schedule. Use the information described here as a guideline only; individual performance can and will vary. Please contact the store to speak with one of our experts if you are interested in further details concerning recommendations on pot size, watering, pruning, repotting, etc.

*-- THIS IS A HOUSEPLANT AND IS NOT MEANT TO SURVIVE THE WINTER OUTDOORS IN OUR CLIMATE --*