



## Bronzita Sedge

*Carex flagellifera 'Bronzita'*

Height: 16 inches

Spread: 16 inches

Spacing: 18 inches

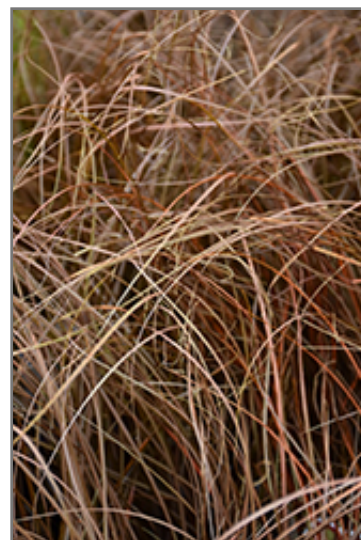
Sunlight: ☐ ☒

Hardiness Zone: 7a

Other Names: Rush

### Description:

An attractive, mound forming plant featuring finely textured, bronze colored foliage carried all season long; perfect in a moist border with full sun, does not like to dry out; great mixed in with other grasses and plants in beds or containers



*Bronzita Sedge foliage*  
 Photo courtesy of NetPS Plant Finder

### Ornamental Features

Bronzita Sedge is primarily valued in the garden for its cascading habit of growth. Its attractive grassy leaves remain coppery-bronze in color with showy brown variegation and tinges of tan throughout the year.

### Landscape Attributes

Bronzita Sedge is an herbaceous evergreen perennial grass with a shapely form and gracefully arching stems. It brings an extremely fine and delicate texture to the garden composition and should be used to full effect.

This is a relatively low maintenance plant, and is best cleaned up in early spring before it resumes active growth for the season. It has no significant negative characteristics.

Bronzita Sedge is recommended for the following landscape applications;

- Mass Planting
- Border Edging
- General Garden Use
- Groundcover
- Naturalizing And Woodland Gardens
- Container Planting

### Planting & Growing

Bronzita Sedge will grow to be about 16 inches tall at maturity, with a spread of 16 inches. When grown in masses or used as a bedding plant, individual plants should be spaced approximately 18 inches apart. Its foliage tends to remain dense right to the ground, not requiring facer plants in front. It grows at a medium rate, and under ideal conditions can be expected to live for approximately 7 years. As an evergreen perennial, this plant will typically keep its form and foliage year-round.

This plant does best in full sun to partial shade. It requires an evenly moist well-drained soil for optimal growth. It is not particular as to soil type or pH. It is somewhat tolerant of urban pollution. This is a selected variety of a species not originally from North America. It can be propagated by division; however, as a cultivated variety, be aware that it may be subject to certain restrictions or prohibitions on propagation.

Bronzita Sedge is a fine choice for the garden, but it is also a good selection for planting in outdoor pots and containers. It is often used as a 'filler' in the 'spiller-thriller-filler' container combination, providing a canvas of foliage against which the thriller plants stand out. Note that when growing plants in outdoor containers and baskets, they may require more frequent waterings than they would in the yard or garden.