



## Slowmound Mugo Pine

*Pinus mugo* 'Slowmound'

Height: 3 feet

Spread: 4 feet

Sunlight: ☉

Hardiness Zone: 3a

Other Names: Mugho Pine, Swiss Mountain Pine



*Slowmound Mugo Pine*  
Photo courtesy of NetPS Plant Finder

### Description:

A high quality evergreen garden shrub with an extremely dense, mounded habit of growth throughout its life, very compact and slow growing, rugged and hardy, excellent for form, texture and color detail in home gardens or for rock gardens; needs full sun

### Ornamental Features

Slowmound Mugo Pine has emerald green foliage. The needles remain emerald green throughout the winter. Neither the flowers nor the fruit are ornamentally significant.

### Landscape Attributes

Slowmound Mugo Pine is a dense multi-stemmed evergreen shrub with a more or less rounded form. Its relatively fine texture sets it apart from other landscape plants with less refined foliage.

This is a relatively low maintenance shrub. When pruning is necessary, it is recommended to only trim back the new growth of the current season, other than to remove any dieback. It has no significant negative characteristics.

Slowmound Mugo Pine is recommended for the following landscape applications;

- Mass Planting
- Rock/Alpine Gardens
- General Garden Use

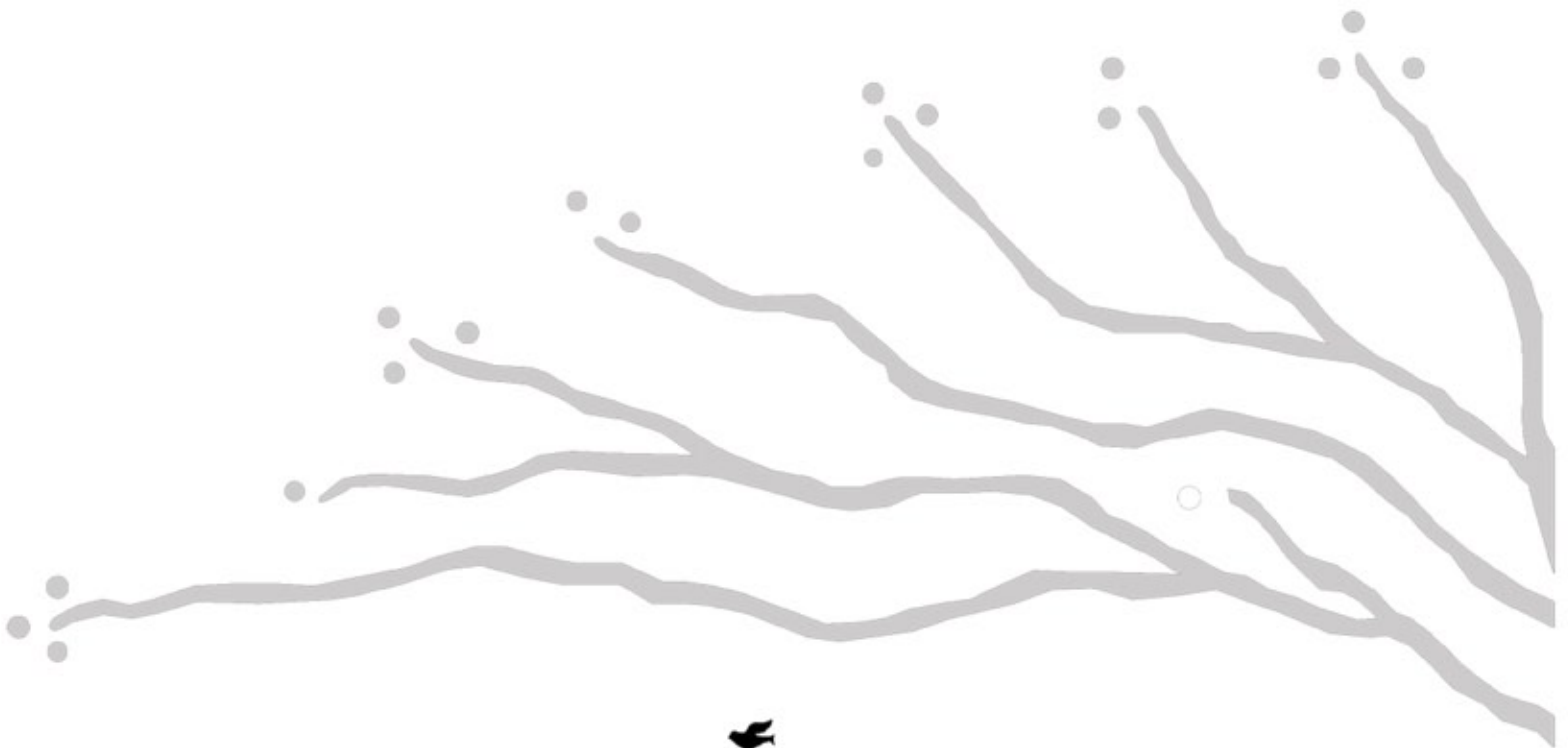
### Planting & Growing

Slowmound Mugo Pine will grow to be about 3 feet tall at maturity, with a spread of 4 feet. It tends to fill out right to the ground and therefore doesn't necessarily require facer plants in front. It grows at a slow rate, and under ideal conditions can be expected to live for 50 years or more.





This shrub should only be grown in full sunlight. It prefers dry to average moisture levels with very well-drained soil, and will often die in standing water. It is considered to be drought-tolerant, and thus makes an ideal choice for a low-water garden or xeriscape application. It is not particular as to soil type or pH, and is able to handle environmental salt. It is highly tolerant of urban pollution and will even thrive in inner city environments. This is a selected variety of a species not originally from North America.



6055 Hwy. 212 • Chaska, MN 55318 • 952.361.9954 • [Info@TheMustardSeedInc.com](mailto:Info@TheMustardSeedInc.com) • [www.TheMustardSeedInc.com](http://www.TheMustardSeedInc.com)

*... the birds of the air can perch in its shade. Mark 4:30-32*